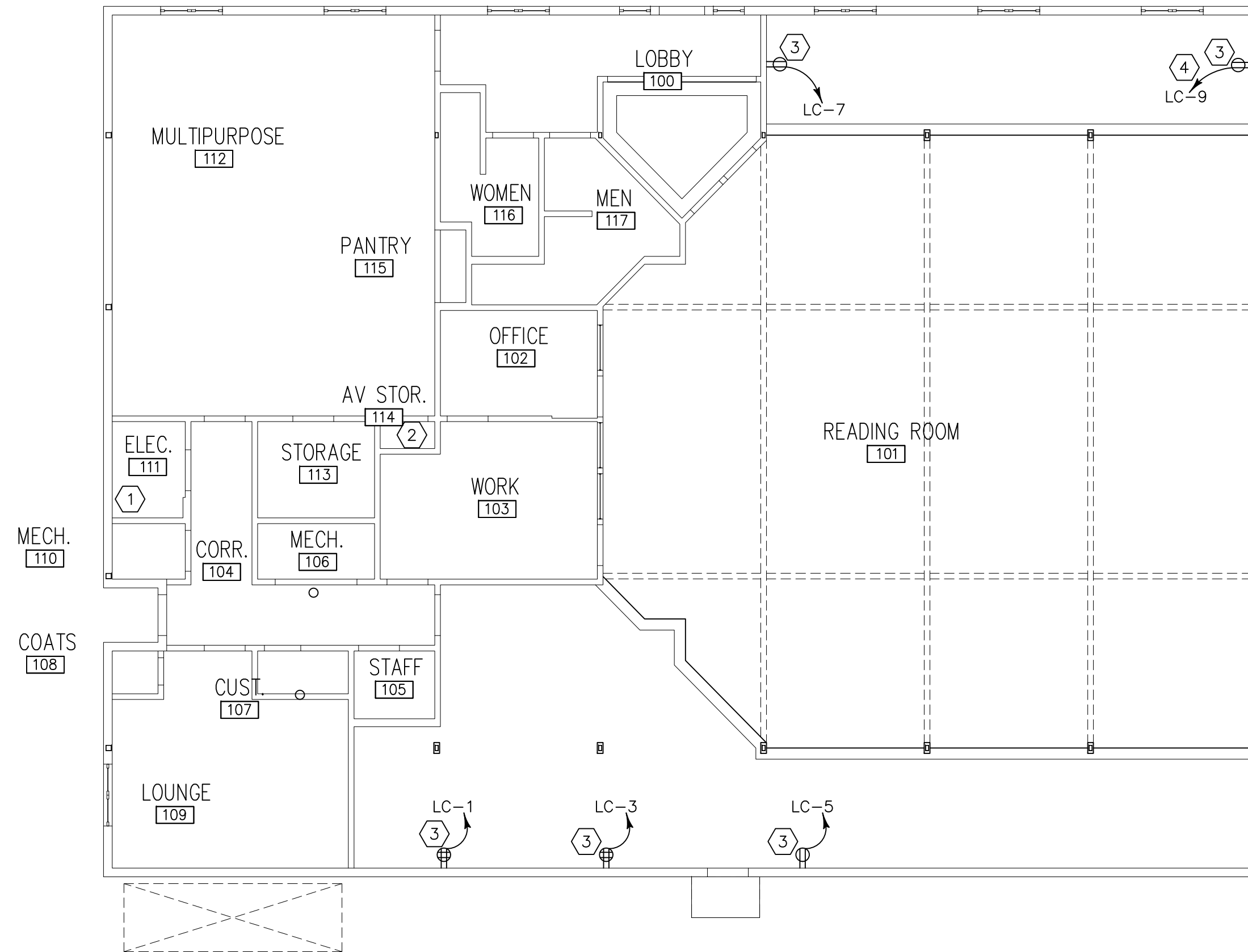


## GENERAL NOTES THIS SHEET

- A. ALL WIRING SHALL BE #12 AWG MINIMUM, ALL CONDUIT SHALL BE 1/2" MIN, AND ALL CONDUIT SHALL CONTAIN A #12 GRD MIN.
- B. PANEL LC SHALL BE 42 CIRCUIT, 120/240V, SINGLE PHASE, 3 WIRE, S/N, 150A, 18K AIC, WITH 160K TVSS. PROVIDE 30-20A, 1P, BREAKERS AND 12 SPACES.
- C. EACH HOME RUN SHOWN SHALL LAND ON ITS OWN, SEPARATE, 20A BREAKER IN PANEL LC.

## SPECIFIC NOTES THIS SHEET:

- ① EXISTING DISTRIBUTION PANEL. PROVIDE A NEW 250V, 2P, 200A FUSED SWITCH IN SPACE AVAILABLE. FUSE AT 150A.
- ② NEW PANEL LC. COORDINATE EXACT LOCATION WITH ARCHITECT PRIOR TO ROUGHIN. ROUTE 3#1/0 AWG AND 1#6 GRD IN 1 1/2" C FROM PANEL LC TO EXISTING DISTRIBUTION PANEL AND MAKE CONNECTIONS TO 150A FUSED SWITCH.
- ③ TYPE MC CABLE MAY BE USED FOR CIRCUITRY FROM DIRECTLY ABOVE RECEPTACLE, ABOVE ACCESSIBLE CEILING, DOWN WALL, TO RECEPTACLE LOCATION. OTHERWISE, SEE SPECIFICATIONS FOR WIRING METHODS.
- ④ HOME RUN #10 AWG.

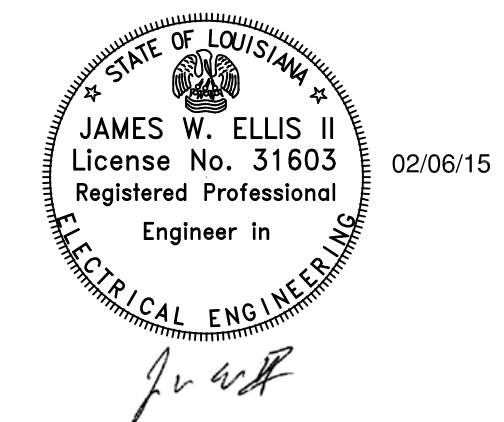


### 1 POWER PLAN E-3

scale: 1/8" = 1'-0"

### ELECTRICAL LEGEND

\$	FLUSH MOUNTED WALL SWITCH WITH STAINLESS STEEL DEVICE PLATE, SINGLE POLE, 20A, 120/277V, SATIN FINISH, MOUNTED AT 48" A.F.F. TO CENTERLINE OR AS NOTED.
\$s	SAME SPECS AS ABOVE EXCEPT SYSTEM SWITCH. SEE SPECIFICATIONS.
\$s\$4	WALL SWITCHES WITH SAME SPECS AS ABOVE EXCEPT: 3-WAY, 4-WAY
⊖	FLUSH WALL MOUNTED, DUPLEX RECEPTACLE, 20A, 120V, MOUNTED AT 18" A.F.F. TO CENTERLINE OR AS NOTED.
⊖	DUPLEX RECEPTACLE WITH SAME SPECS AS ABOVE WITH INTERNAL GROUND FAULT CIRCUIT INTERRUPTER.
⊖	QUADRUPLEX RECEPTACLE WITH SAME SPECS AS ABOVE.
⊖	HEAVY DUTY FUSED DISCONNECT SWITCH WITH VISIBLE BLADES.
⊖	PANELBOARD, SURFACE OR RECESSED AS SHOWN
⊖	CONDUIT AND WIRE CONCEALED IN WALL OR ABOVE CEILING. THE ARROW INDICATES A HOMERUN TO THE PANEL. SLASHES MARKS INDICATE THE NUMBER OF #12 WIRES IN THE CONDUIT, ABSENCE OF SLASHES IS (2) #12. SIZE CONDUIT PER N.E.C. A SEPARATE EQUIPMENT GROUND IS REQUIRED BUT IT IS NOT DENOTED WITH A SLASH. #10 DENOTES AN INCREASE IN THE WIRE SIZE.
⊖	JUNCTION BOX WITH COVER PLATE
WL	WET LOCATION
A.F.F./A.F.G.	ABOVE FINISHED FLOOR OR GRADE
CT	COUNTER TOP HEIGHT



<b>ELLIS</b>	108 ROYAL CRESCENT DR. BELLE CHASSE, LA 70037 (504) 415-7670
ENGINEERING, L.L.C.	PROJECT No. 14017
JAMES W. ELLIS II, P.E., LOUISIANA LICENSE # 31603	

RENOVATIONS TO  
**LIVE OAK LIBRARY**  
FOR  
**JEFFERSON PARISH**

WAGGAMAN, LA

DATE: 01.30.2015  
DRAWN BY:  
REVISIONS:

**E-3**

SHEET 13 OF 13

**BURGDahl & GRAVES**  
A.I.A. ARCHITECTS  
A PROFESSIONAL CORPORATION · PHONE (504) 566-4433